

**USEFUL CONTACTS**

**Tawa Squash Club**  
232 8200  
[info@tawasquash.co.nz](mailto:info@tawasquash.co.nz)  
[www.tawasquash.co.nz](http://www.tawasquash.co.nz)

**Club Manager**  
Peter Bowers  
027 6SQUASH  
(0276 778 274)

**President**  
Bryan Smith  
021 515 215

**Club Captain**  
Aaron Havill  
027 777 5038

**Junior Convenor**  
Nikki Farmer  
021 053 3292

**Interclub Convenor**  
Wayne Applegate  
027 737 8470

**Club Coach**  
Nick Mita  
021 526224

**Bar Hours**  
Mon 5pm - 9pm  
Tue 5pm - 10pm\*  
Wed 5pm - 10pm\*  
Thu 5pm - 10pm  
Fri 5pm - 8pm  
Weekends As required

**Pro Shop Hours**  
Mon 5pm - 9pm  
Tue 5pm - 10pm\*  
Wed 5pm - 10pm\*  
Thu 5pm - 10pm  
Fri 5pm - 8pm  
Weekends By appointment  
During Tournaments  
\*During interclub activity

**SPONSORS OF THE WEEK**

**A-Z FLOORING**

Again, A-Z Flooring have come to the party supporting Tawa Squash by sponsoring the Tawa Open again. Many years of support on and off the court by Malcolm, Nicola and family has helped make Tawa the biggest (by members) and friendliest club in Wellington. Check the A-Z Flooring website to see how they can help you.  
<http://www.azflooring.co.nz>



*Issue 94 March 26<sup>th</sup> 2018*

**Successful Tournaments at Tawa**

**Outlet City Tawa Women's Open** A very enjoyable tournament by 41 women was hosted by Tawa last month. The vibe was fantastic and the concept endorsed by all. This will be bigger and better next year with Outlet City committed to again be the major sponsor.

Divisional winners were:

Women's Champion	Debbie Dunbar	Division 1	Ness Petrowski
Division 2	Esther Parkin	Division 3	Sally Lane
Division 4	Kerryn Cooper	Division 5	Vanessa Chan

**Totalflow Tawa B Grade and Below Tournament** 100 entries were accepted in this year's Totalflow B & Below tournament. Playing PAR 11 scoring, a feature was the number of 5 set matches – however the tournament kept to time and the feedback was extremely positive.

The winners were:

Men's Champion	Tarek Abouelkheir	Women's Champion	Debbie Dunbar
Men's Division 2	Hayden Lloyd	Women's Division 2	Natasha McMillan
Men's Division 3	Jacob Burt	Women's Division 3	Hannah Dunbar
Men's Division 4	Oliver Dunbar	Women's Division 4	Tanya Fulcher
Men's Division 5	Nick Yorker		
Men's Division 6	Stephen Dean		
Men's Division 7	Des Bloomfield		
Men's Division 8	Shay Gannon		

**A-Z Flooring Tawa Open Tournament**

Malcolm and Nicola from A-Z Flooring have again agreed to sponsor our most prestigious tournament of the year from May 10<sup>th</sup> – 14<sup>th</sup>. We are hoping to attract the best players in Wellington to showcase the game at a different level to what most of us are familiar with. It is expected we will accept entries in all adult grades. Details and entries can be received on iSquash now at <https://www.squash.org.nz/sit/homepage>  
**ENTRIES CLOSE FRIDAY 4<sup>th</sup> May**

**Tawa Squash Open Day Sat April 7th**

Tawa Squash is supporting a Squash NZ initiative and having an open day on Saturday April 7<sup>th</sup> from 11am – 4 pm. There will be a variety of activities for all ages. Your participation will be welcome as we endeavour to grow our club even more. How can you help? Bring a friend, workmate or family member along so they can get a feel for the club and the game. Activities during the day include singles, doubles, coaching, racket ball, and free sausages on bread all day. The quarter finals of the Commonwealth games singles will be shown on the big screen during the day.

**WIN WIN WIN**  
**Seniors** - Bring a friend, win two drinks from the bar (for every non member friend you bring!)  
**Juniors** – bring a friend and win a HELLthy Kids Pizza from Hells Pizza in Newlands (limited to 20.)  
**New Memberships** - 10% discount for new member signups on the day (or 1<sup>st</sup> month free if paying monthly)

**Thanks a Million to...** *all the volunteers who helped run the Totalflow B & Below tournament* – there are too many to name but you know who you are. Tawa's reputation as a fantastic host club was maintained with the fantastic work done by you all. We are luckier than most clubs having such a big pool of willing volunteers – sincere thanks to everyone involved.

**Entertainment Book Wellington and Manawatu Combined**

It's that time of year again – pre ordering of this ever popular Entertainment Book can now be done. Check the participating businesses online at <https://online.flippingbook.com/view/196241/>. Every book sold provides a \$13 reward to Tawa Squash if we are nominated as your “fundraising activity”.

**Regular Sunday Working Bees - first one Sunday April 29<sup>th</sup>**

We are planning on holding regular working bees on the last Sunday of each month (not this month though – Easter), nor December. There are a multitude of small menial tasks that need to be done that are regularly overlooked. These range from cleaning the stove to dusting of cob webs, cleaning the guttering to gardening, shelf cleaning to furniture cleaning. Most of these tasks are light and quick but occasionally we will be



Bryan Smith President



Peter Bowers Club Mgr



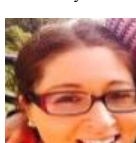
Calixte Niland Treasurer



Aaron Havill Club Cptn



Rex Verry Committee



Nikki Farmer Jnr Cnvnr



Louise Sinclair Vice Pres



Richie Hoare Developmnt



Chris Sinclair Propty Mngr

chopping branches, mowing lawns, painting parts of our facility, doing court maintenance and occasional minor building work. It is envisaged that the working bees will run from 1pm till 3 or 4pm and will fit in nicely with a game of squash before or after, with a reward of a BBQ afterwards. Keep an eye out closer to the date when we ask for volunteers to help out.

### President's Corner

Hi fellow squashies. The Management Committee has had a busy start to the year running tournaments (Women's and the TotalFlow B & Below) and tidying up our own house (volunteer role wise). The responses to the surveys from the tournaments we have run are both very positive and have both included additional feedback on how we can improve the events even more.

A big thankyou to Outlet City and TotalFlow Ltd for the amazing support for both of those tournaments.

Please make sure you sign up to the A-Z Flooring Tawa Open early so you do not miss out!

I would like to make special mention about Stephen Dean who won his first ever championship division win at Otaki in February, then he backed that up with another 2 championship wins at Island Bay and Tawa. Great effort Stephen!

You will have seen the recent email around the delay to the Special General Meeting, which is unfortunate but essential to ensure we had all the roles on the Management Committee well defined and agreed to. I will be sending out an email about the SGM date shortly, this will include the roles available on the Committee should you be interested in one of the roles. The SGM will be focused on updates to the constitution and elections for those roles and should only take an hour.

Until then, good luck and enjoy your Squash games whether they be competitive ones or social ones

Cheers, Bryan

### Welcome to our latest new members (since early February)

*Deon Van Rensburg and Anna Du Plessis – partners living in Redwood looking to take up squash again and keep in shape.*

*Johann, Tania and Cailan Krige – introduced by Jannie Pieterse and have now joined as a family*

*Jen Petersen – has rejoined after having a break to have her family, then easing her way back via Mums N Bubs – now a full member again.*

*Lisa McGrath – a keen squashie who has seen the light and 'emigrated' from Auckland.*

*Susan Ryan – another enthusiastic squash player who has moved south. Susan has bought a home in Tawa and resumed her squash career after a couple of years off.*

*'Welcome, and may our existing members make you feel that this is where you belong'*

### What's on

*Friday Junior Club Nights 5pm - 7pm, Members free, non members \$5.  
Small nix 5-8 yr olds 5pm-5:30pm FREE*

*Monday Senior Club Nights Mondays 7:00 – 9:00pm, free*

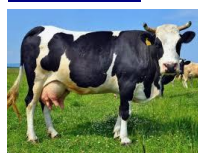
*"The Borough" sponsored Mums n' Bubs Thursdays (9:30am) \$5, full members free*

*National Squash Day at Tawa Squash April 7<sup>th</sup> from 11am-4pm*

*A-Z Flooring Tawa Open Tournament May 10<sup>th</sup>-14<sup>th</sup>*

*Next Working Bee Sunday April 29<sup>th</sup>*

### Humour



Who was the first person to look at a cow and say, "I think I'll squeeze these dangly things here, and drink whatever comes out!"

Or watch a white thing come out a chicken's rear and think, "that ought to taste good"



Did you know, when you rearrange the letters of MOTHER-IN-LAW you get WOMAN HITLER. Hmmm, best keep that one to yourself!

### Thanks to our Sponsors

*Please support our Sponsors as they provide immense help to our Club*

