

USEFUL CONTACTS

Tawa Squash Club
232 8200
info@tawasquash.co.nz
www.tawasquash.co.nz

Club Manager
Peter Bowers
027 6SQUASH
(0276 778 274)

President
Bryan Smith
021 515 215

Club Captain
Aaron Havill
027 777 5038

Junior Convenor
Nikki Farmer
021 053 3292

Interclub Convenor
Wayne Applegate
027 737 8470

Club Coach
Nick Mita
021 526224

Bar Hours

Mon	5pm - 9pm
Tue	5pm - 10pm*
Wed	5pm - 10pm*
Thu	5pm - 10pm
Fri	5pm - 8pm
Weekends	As required

Pro Shop Hours

Mon	5pm - 9pm
Tue	5pm - 10pm*
Wed	5pm - 10pm*
Thu	5pm - 10pm
Fri	5pm - 8pm
Weekends	By appointment

During Tournaments

*During interclub activity

**SPONSORS OF
THE WEEK**



We are very fortunate to have three key sponsors supporting the Tawa Women's Open this year. If you get a chance, please ensure you support these businesses to show your appreciation – they are making a difference to what we offer here at Tawa Squash.



Issue 93 February 7th 2018

Congratulations Evan - Commonwealth Games Team

Today Evan Williams was selected for the NZ Commonwealth Games Squash Team – the first member who has ever played for Tawa to do so. This is a great achievement for Evan who has dedicated much of his life to Squash and will now get to rub shoulders with many of the world's greatest athletes. Evan will be playing in the singles and doubles at the Gold Coast Games. The club wishes Evan well and will be watching when possible from the live feed to the big screen at the club. There will be a nationwide promotion of squash over the next few months to lever of the Commonwealth Games and Tawa will be right amongst the action.



Junior Club Night restarts Friday, Senior Club Night restarts Monday

Junior club night restarts this Friday from 5pm – 7pm. Small Nix (5-8 year olds) is from 5 – 5:30 pm on one court and is at no charge while the rest of the juniors will use the remaining free courts until 7pm. The cost is \$5 per child (free for members and first timers).

Senior Club Night restarts next Monday 12th at 7pm. There is no cost to members or visitors.

Tawa Women's Open

The first Women's Open in Wellington for almost 10 years is on next weekend with entries closing this Friday. Again Tawa Squash is at the forefront of driving squash in Wellington and is delighted to receive support from Outlet City, The Borough and Briscoes who are all assisting with prizes.

ENTRIES CLOSE FRIDAY 9th FEB

Totalflow Tawa B Grade and Below Tournament

Another successful B Grade and Below tournament looms as the Squash season kicks into full speed. Keep your diary free from March 8th-11th to experience another Tawa Squash expertly managed tournament.

Details and entries can be received on iSquash now at <https://www.squash.org.nz/sit/homepage>

ENTRIES CLOSE FRIDAY 2nd March

Painting this weekend

This weekend we are planning on completing the upgrade to the front door area by painting the final coats of the immediate entrance area. We have a couple of volunteers helping – if you would like to pitch in please contact our Property Co-ordinator, Chris Sinclair, on 027 437 0966.



Court Lights to be Replaced this Sunday

This Sunday will see Chris Sinclair, our volunteer Property Co-ordinator, arrange the replacement all 72 court light fluorescent bulbs and starters so you will notice the courts are much brighter from next week. This is quite a big job requiring scaffolding to be installed and requires a bit of Dutch courage working 7-8 meters above the ground.

Thanks a Million to... Nick Hogg, Gordon Hunter, Richard Creasy and Chris Appleby – for giving up their Saturday morning to sand, scrape, tape and undercoat the front entrance. Preparation like this is thankless work with those doing the final coats often getting the glory. Your efforts are much appreciated.

Autumn Interclub

Autumn Interclub starts on March 13th and 14th and a poster and sign up sheet will be on the notice board soon. Wayne Applegate will be co-ordinating this so those of you on the grading list can expect communication directly from him inviting you to play. Last year we had fantastic numbers and it's expected we will have at least the same numbers this year – this is one of the many reasons we are the current Wellington Regional Club of the Year. If you're not on the grading list and would like to play, request this by return email.

Water Fountain moved

By popular demand, the water fountain has been moved back to its original position adjacent to courts 1 & 2. Richie Hoare has kindly installed drainage for the waste from the fountain. This was a bigger job than many would think because, due to the floor being concrete, the waste pipe had to run around the wall of the ladies changing rooms, through the hot water cylinder cupboard and through the back wall to the drain. Thanks Richie – a lot of frustration will now be eliminated.



Bryan Smith President



Peter Bowers Club Mgr



Calixte Niland Treasurer



Aaron Havill Club Cptn



Rex Verry Committee



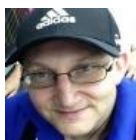
Nikki Farmer Jnr Cnvnr



Louise Sinclair Vice Pres



Richie Hoare Development



Chris Sinclair Property Mngr

President's Corner

Hi squashies, welcome all back to 2018. I know a lot of you have been hitting the court recently, it is great to see.

There are a few things coming up in the near horizon:

- the Women's Open on the 16-18th Feb (please come along and support this, it is a fantastic initiative for Women's squash).
- a membership survey is about to be sent out to you all and I openly welcome you all to take part in this. We are really keen to know what is working well and what can be improved upon so please take this opportunity to have your say.
- following on from the AGM end of last year, a Special AGM will be announced shortly to vote and appoint the new management committee. Watch this space.

Finally, congratulations to Evan Williams for his selection in the NZ Squash Commonwealth Games team, a fantastic achievement and we all hope you do well Evan!

Cheers, Bryan

Welcome to our latest new members (since early December)

Alison McCabe – who has her son Jacob as a junior. Alison began coming to mums n bubs and is enjoying the workout squash gives.

Duhee Kim – partner of Adam Blankard. Dee has enjoyed the Summer Fun competitions so much she has decided to join.

Erik Dymond-Cate – a new junior who has been encouraged by his uncle, a member of another club, to join. **Lee and Nadine Steffens** – two Whitby-ites keen on fitness and have joined up to complement their existing fitness programme.

Sallie Lane – has joined to get more squash with more similar level players, and also to continue to nurture her grandson who already comes along to our junior nights.

Sam Ardern – a resident of Churton Park who has joined after not playing squash for a few years. Sam will provide even more depth at the D/E grade level.

Rebecca Barnett – a product of Mitchell Park now living in the city. Rebecca has joined to get more game time with Debs Dunbar and to be part of a friendly, welcoming, and well maintained club. Currently Rebecca is the top Woman's player in Wellington.

Eric Fa'anoi – a product of the schools programme at St Francis Xavier from over 7 years ago, Eric has joined so he can have a hit when he's home from University studies.

'Welcome, and may our existing members make you feel that this is where you belong'

What's on

Friday Junior Club Nights *from Friday 9th*

Monday Senior Club Nights *from Monday 12th Monday 18th 7:00 – 9:00pm, free*

"The Borough" sponsored Mums n' Bubs *Thursdays (from 15th from 9:30am) \$5, full members free*

* Upgraded entrance – painting, tiling *Ongoing*

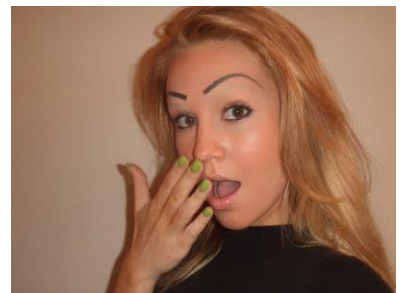
Tawa Women's Open *Fri 16th – Sun 18th Feb*

Totalflow Tawa B & Below Tournament *March 8th to 11th*

Autumn Interclub *From March 13th and 14th*

Humour

Last week I told a Tawa Squash Club member that I thought she drew her eyebrows too high. She seemed surprised.



Repeating news

Car Parking

Parking at Tawa Squash. There is ample parking on the main road, in the school carpark next door which we are allowed to use after school and in weekends and holidays, and at the top of the path between the school and the Squash Club. Please refrain from parking on the berm of the Redwood Village.

Thanks to our Sponsors

Please support our Sponsors as they provide immense help to our Club

